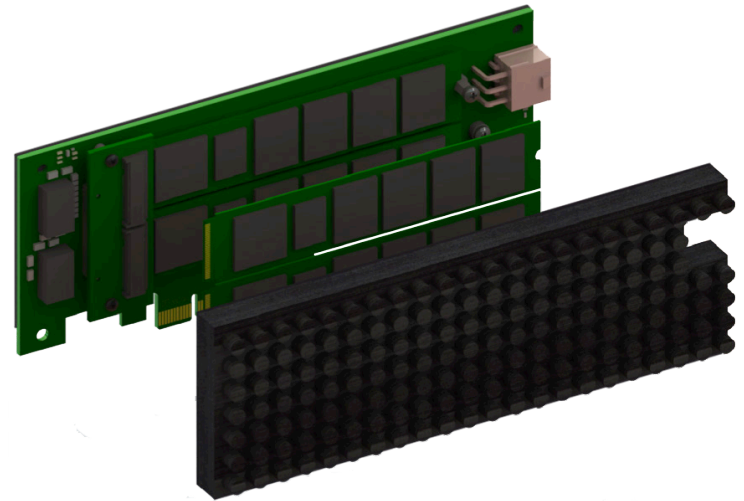


MAXio® NVMe

Low Profile Add-In Card (AIC) SSD

S-Series

High Capacity, Resilient,
and Built for Demanding
Commercial and Industrial



MAXio NVMe Low Profile AIC SSD delivers high capacity, high performance, and can withstand the rigors of industrial environments. With up to 4 units of M.2 SSDs, it packs TBs of data in a low profile add-in card form factor. Applications requiring expandability and on-demand capacity upgrade can benefit from using the MAXio NVMe Low Profile AIC SSD by growing and scaling the capacity as needed.

Advanced flash management features such as wear leveling, error correction, over-provisioning, garbage collection technologies, with TRIM support, extend the drive life and ensures reliability required by commercial and industrial applications.

Applications

MAXio NVMe Low Profile AIC SSDs are ideal for commercial and industrial applications such as:

- Oil, gas and solar infrastructure data gathering
- Airborne vehicle data delivery and retrieval
- Communications infrastructure management
- Industrial automation
- Telemetry applications
- Non-linear editing
- Content Delivery Network
- Entertainment and broadcasting applications

Features

- Up to 4x M.2 NVMe Industrial SSDs in a Low Profile Add-In Card Form Factor
- Power On Data Erase with NVMe Format Command
- PowerGuard® Power Loss Data Protection
- High Performance NVMe
- TRIM Support
- SMART Monitoring and Reporting

Product Specifications

Physical

Form Factor	PCIe Low Profile, Half Length
Connector	PCIe 3.0 x8, NVMe 1.2

Environmental

Operational Temperature	Industrial: -40 to 85 °C
-------------------------	--------------------------

Capacity

MLC	Expandable Up to 8TB (Up to 4x M.2 SSD per AIC. Dependent on M.2 SSD capacity)
-----	---

Note: 1 TB = 1,000,000,000,000 Bytes

Reliability

MTBF	>2,000,000
Write Endurance	MLC: >11 PBW @ 8 TB
TRIM	Supported
SMART	Supported

Performance

Sequential	Read: Up to 8 GB/s Write: Up to 4 GB/s
------------	---

Security

Power On Data Erase	Supported via NVMe Format command
---------------------	-----------------------------------

Power

Voltage	12V / 3.3V DC (±5%)
Power Saving Modes	DIPM/HIPM, DEVSLP
Active (Read/Write)	< 37W (Depending on capacity and number of M.2 SSDs)
External Power Connector	Optional

Warranty

Standard	1 year
Extended (Optional)	2 years

For more Information

Email: sales@bitmicro.com

Call: +1 (888) 72-FLASH